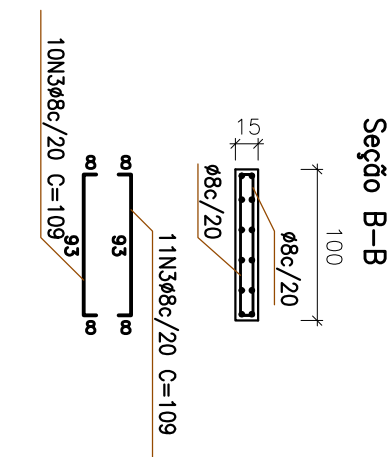
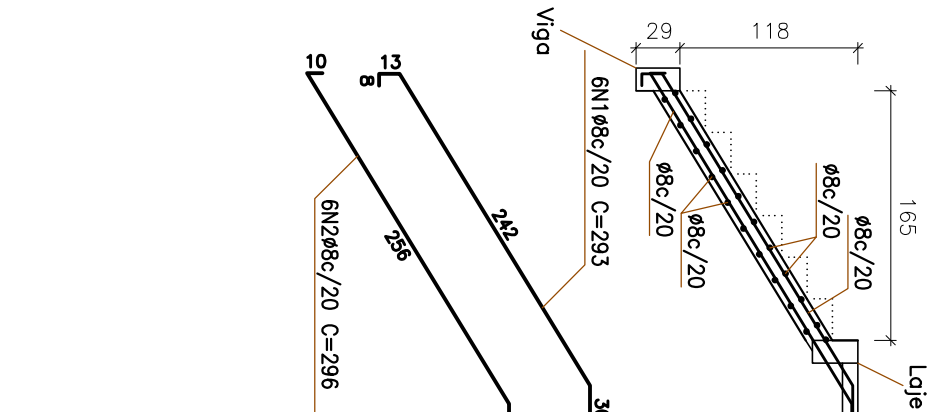
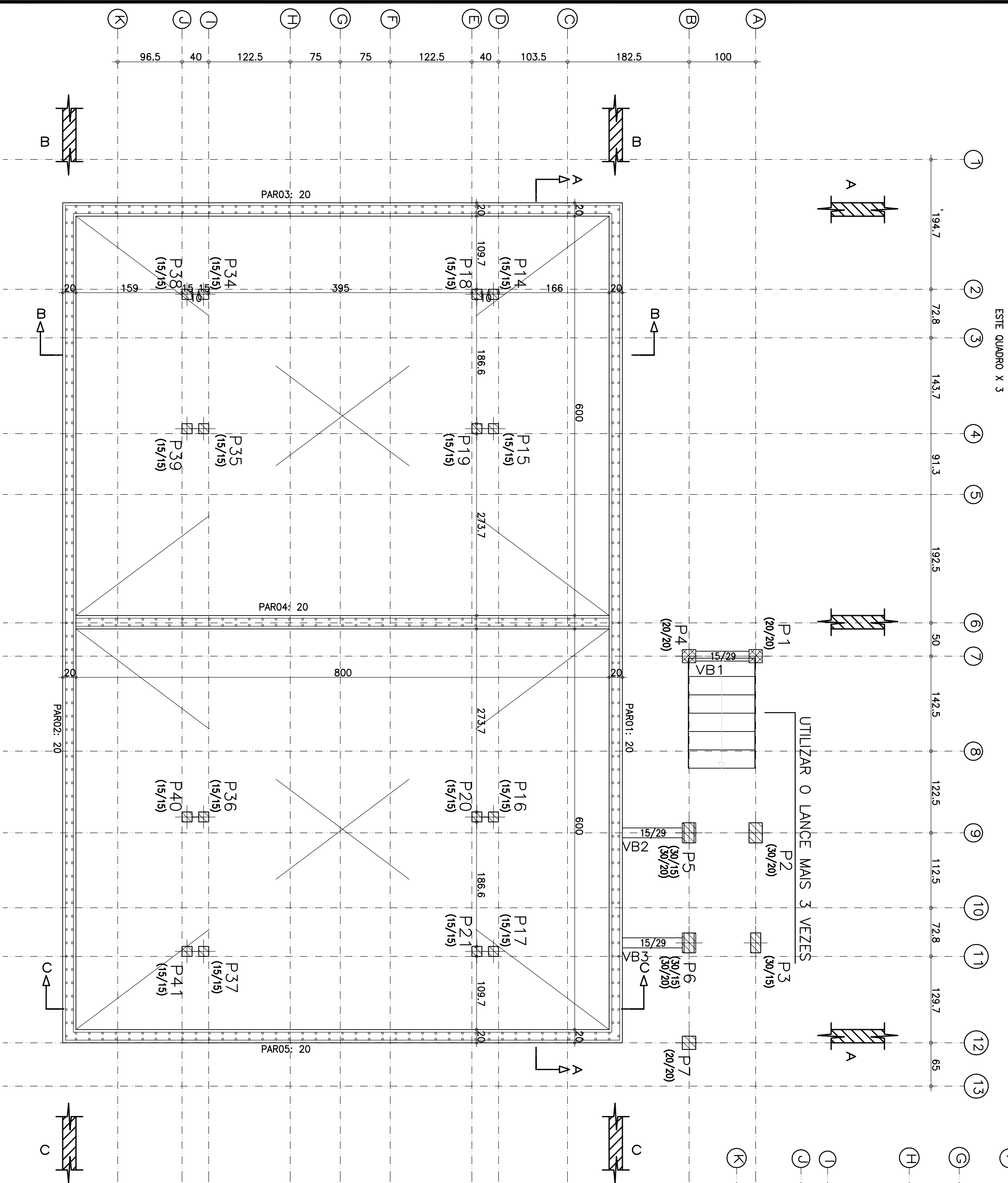


[illegible]

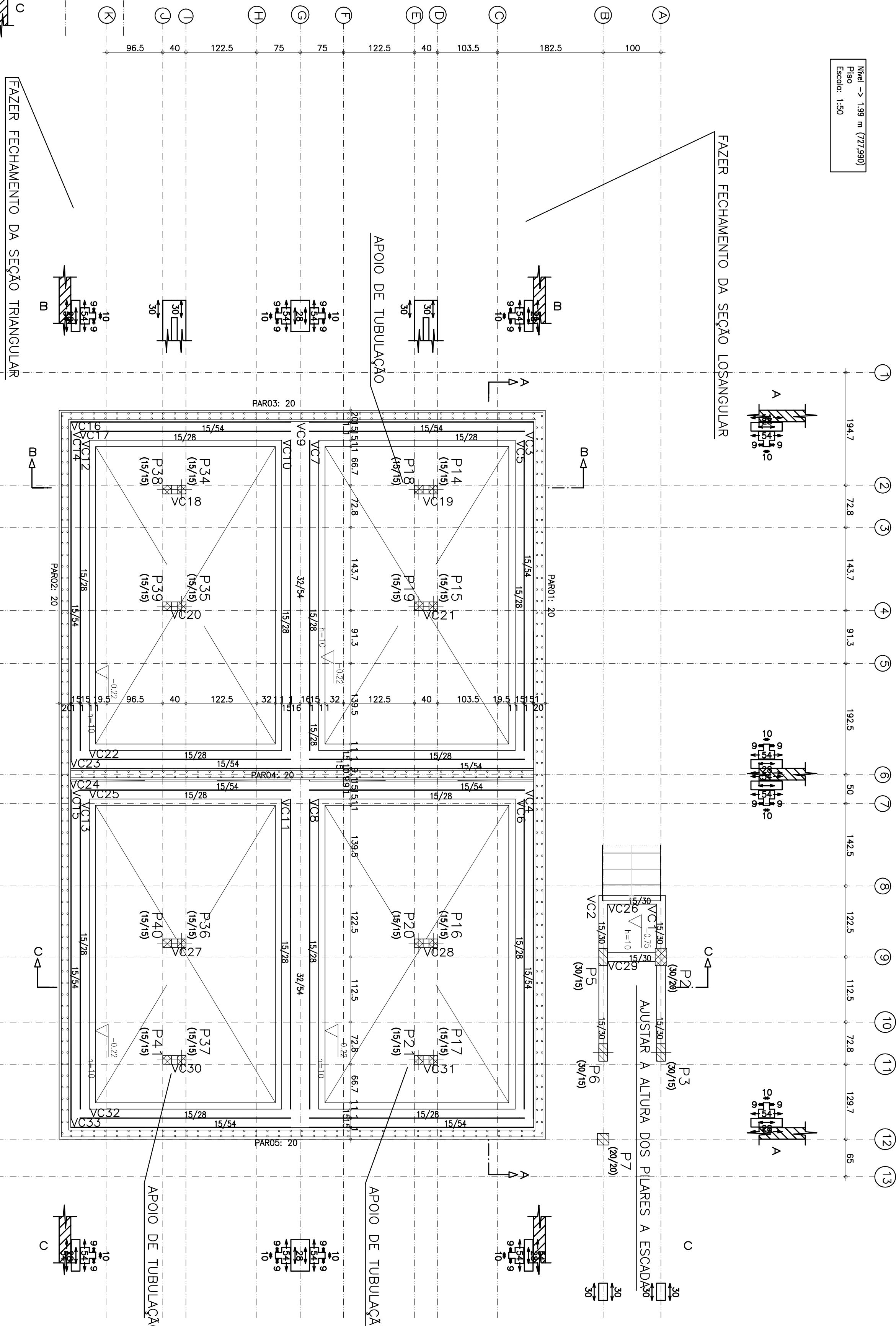
Elemento	Pos	Diam. ϕ (cm)	DoB (cm)	RetD (cm)	Comp (cm)	Total ϕ -50- ϕ -60-B (kg)
Tramo 1	1	$\phi 8$	6	283	293	1758
	2	$\phi 8$	6	296	1776	7.0
	3	$\phi 8$	21	109	2289	9.0
			Total 10%		25.2	0.0
					$\phi 8$: 25.2	0.0
Total:						25.2

Escala 1:50



Nível -> 1.99 m (727,990)
Piso
Escola: 1:50

FAZER FECHAMENTO DA SEÇÃO LOSANGULAR



Nível Terreno	-> 0,00 m 726,000)
Piso	
Escala:	1:50

LEGENDA: NOTAS ARTICULAÇÃO

REVISÕES

MINISTÉRIO DA INTEGRAÇÃO NACIONAL - MI

[illegible]